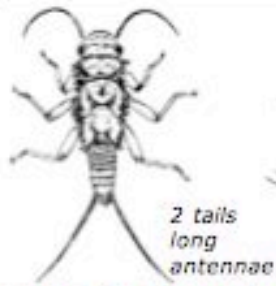


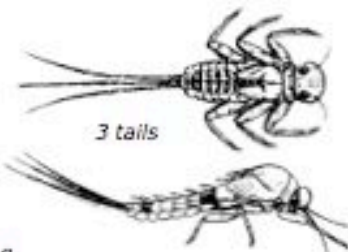
Macroinvertebrate Identification Key

GROUP 1 – Very Intolerant of Pollution



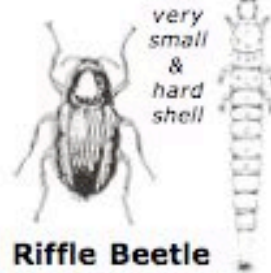
Stonefly Nymph

2 tails
long
antennae



Mayfly Nymph

3 tails



**Riffle Beetle
Adult & Larva**

very
small
&
hard
shell



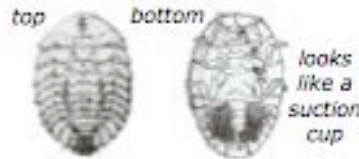
Caddisfly Larva

makes a case from
twigs, rocks, leaves



**Dobsonfly
Larva**

large head &
2 pinchers



Water Penny Larva

top

bottom

looks
like a
suction
cup



**Right-
Handed
Snail**

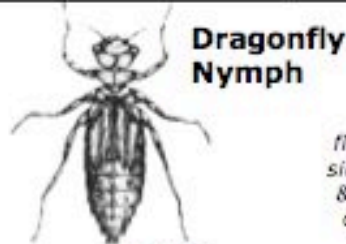
must be
alive to
count

GROUP 2 – Moderately Intolerant of Pollution



Damselfly Nymph

3 paddle-like (feathery) tails



**Dragonfly
Nymph**

no tails
large eyes



Scud

flattened
side-ways
& swims
on side

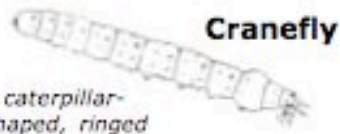


Crayfish

looks like
a mini-
lobster

Sowbug

flattened top to
bottom (looks
like a pill bug)



Cranefly

caterpillar-
shaped, ringed



Clam/Mussel

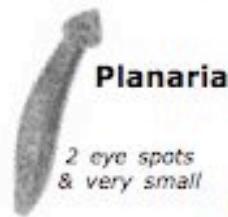
must be
alive to
count

GROUP 3 – Fairly Tolerant of Pollution



**Midge
Larva**

small, but
visible head
intense wiggler



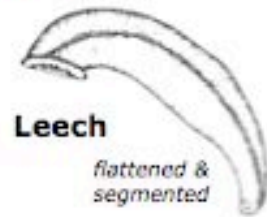
Planaria

2 eye spots
& very small



Black Fly Larva

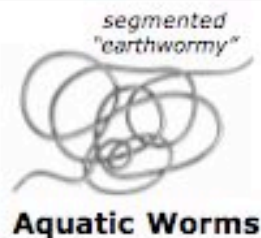
one end is
swollen



Leech

flattened &
segmented

GROUP 4 – Very Tolerant of Pollution



Aquatic Worms

segmented
"earthwormy"



**Left-
Handed
Snail**

must be
alive to
count



**Rat-tailed
Maggot**



**Blood Midge
Larva**

bright red